

# MIEC

## SPECIFICATION OF CRYSTAL UNIT

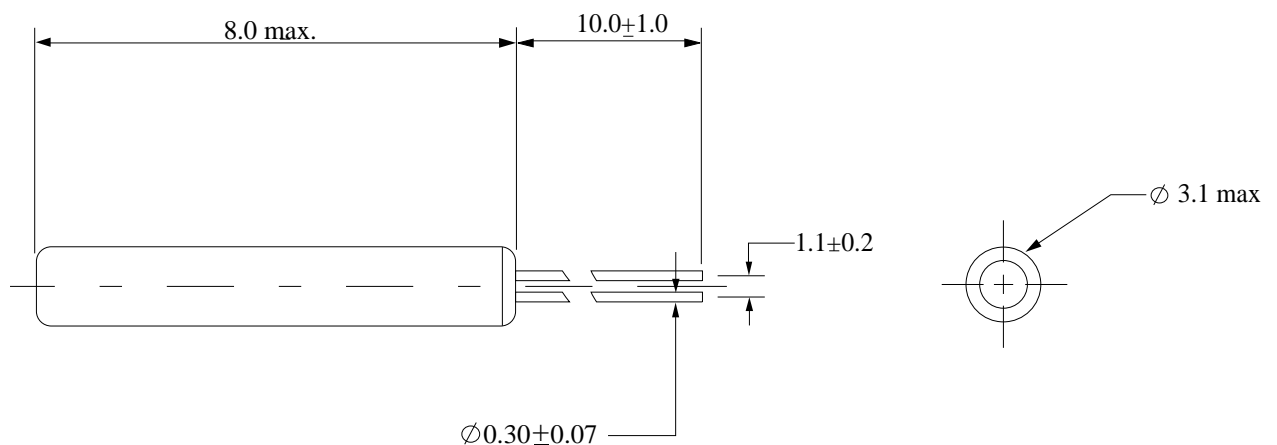
**PART NO. :**

**AT38-13.4916M2030F**

### ELECTRICAL CHARACTERISTICS

1. Nominal Frequency	13.4916 MHz
2. Holder Type	AT38
3. Frequency Tolerance	$\pm 30\text{ppm @ }25^{\circ}\text{C}$
4. Series Resistance	$60\ \Omega\text{max}$
5. Insulation Resistance	$500\text{M}\Omega\ \text{min, at }100\text{VDC}$
6. Operating Temperature Range	$\pm 50\text{ppm @ }-10^{\circ}\text{C to }+60^{\circ}\text{C}$
7. Loading Capacitance	20pF
8. Drive Level	$50\ \mu\text{Wmax.}$
9. Shunt Capacitance	1pF
10. Storage Temperature Range	$-10^{\circ}\text{C to }+60^{\circ}\text{C}$
11. Temperature Tolerance	$\pm 50\text{ppm @ }-10^{\circ}\text{C} \sim +60^{\circ}\text{C}$
12. Oscillation Mode	Fundamental

### DIMENSIONS (mm)



Prepared by: Leo Wong

Checked By: \_\_\_\_\_

DOC. No: AT38-13.4916M2030F